

RP (Round Plastic)

• Refrigeration room • Food industry • Pools

- Application for refrigeration rooms • Food industry • Pools.
- IP67 water proof
- IK08 rating indicates excellent resistance to external impacts
- Waterproof dustproof impactproof available
- Different accessories design greatly reducing the costs of the installation
- Tri-proof Patented Design
- Ultra bright 160lm/w
- Unique light distribution design for comfortable optical performance
- Suspend and ceiling mounted for convenient installation and maintenance
- Adjustable installation angle can change the direction of light
- Can be linkable
- Product automatic protection (OVP OLP OTP OCP)



Small Round LED Tri-proof Light —T60

Power

20-48W

Size

2FT 3FT 4FT 5FT

Lumen

2600-6240

CCT Range

WW (3000K) NW (4000K) DW (5000K) CW (6500K)

Input Voltage

AC220~240V 50/60Hz AC100~277V 50/60Hz AC347V 50/60Hz



Parameter

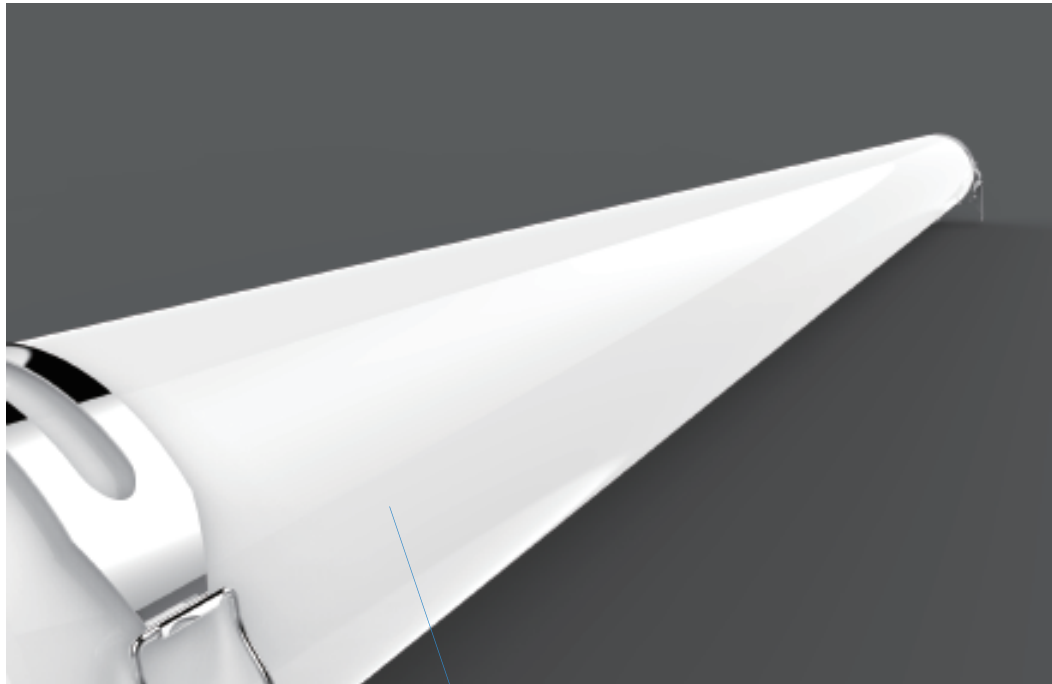


Model NO.	Power (W)	Clear Lumens	Cover Lm/W
T60 600mm	20	2600	130
T60 1200mm	36	4680	130
T60 1500mm	48	6240	130

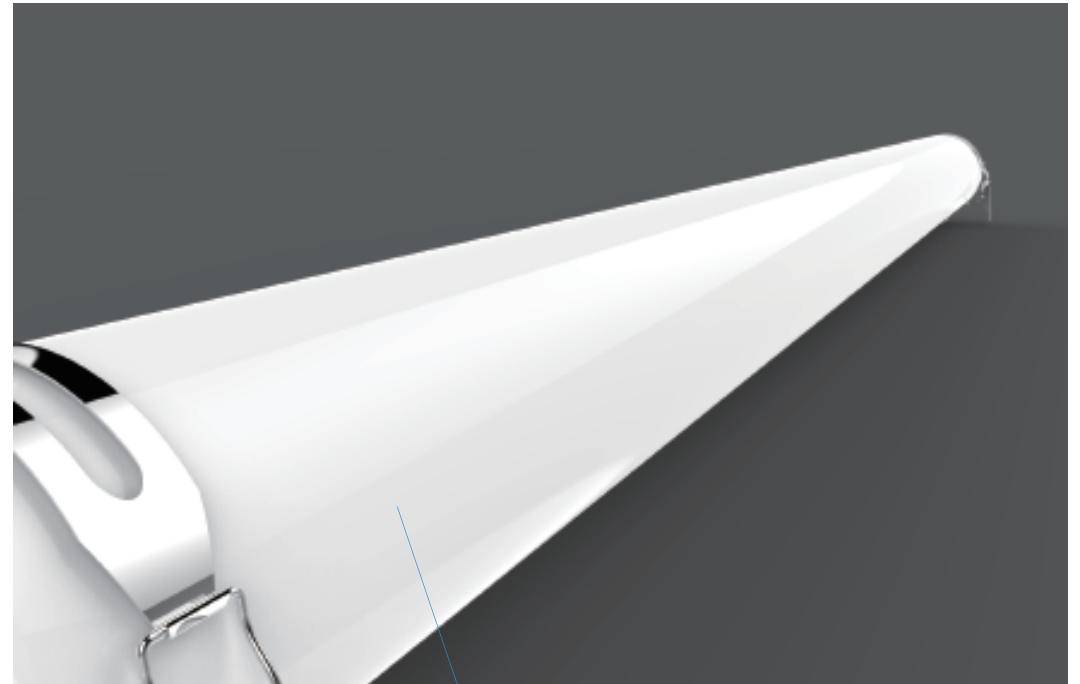
Frosted cover is 10Lm/W less than clear cover
Above lumens based on 4000K Ra : 80

Light Source : 2835
CRI Range : 80 / 90 / 95
CCT Range : WW(3000K) NW(4000K) DW(5000K) CW(6500K)
AC Input : 100-240V(EU) 100-277V(US) 347V(Ca)
Beam Angle : 120°
Light Efficiency : 130Lm/W, 160Lm/W
Size : 70(W)*70(H)
Waterproof : IP67 & IK08
Recommended Installation Height : 3-8M
Function : ●Dimmable ○Emergency ○Motion sensor

Products Series



PMMA



PC

Technology Support



Farm

There are substances such as ammonia, which can be resisted by ERVAN FP series solution with special material.



Refrigeration Room

ERVAN FP series with IP67 & IK08 and low temperature -20°C resistance can be suitable for this location.



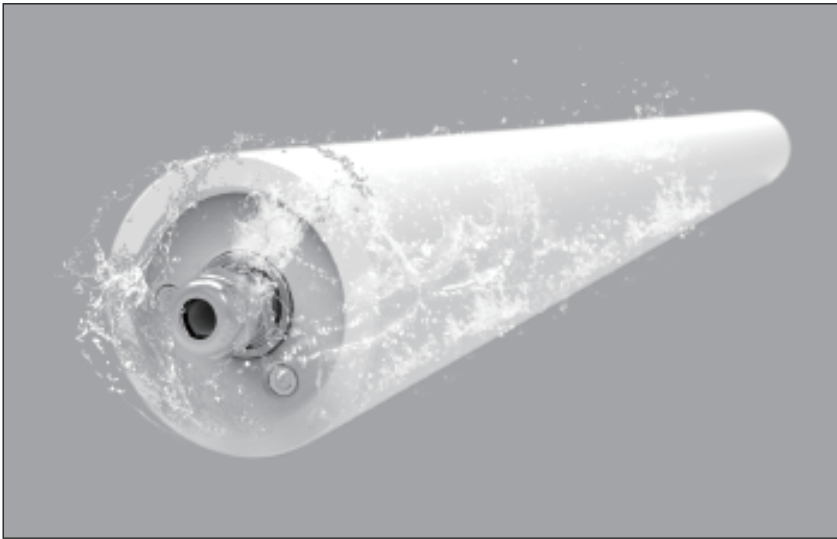
Food Industry

FP series with round and smooth PC design can be easily cleaned.

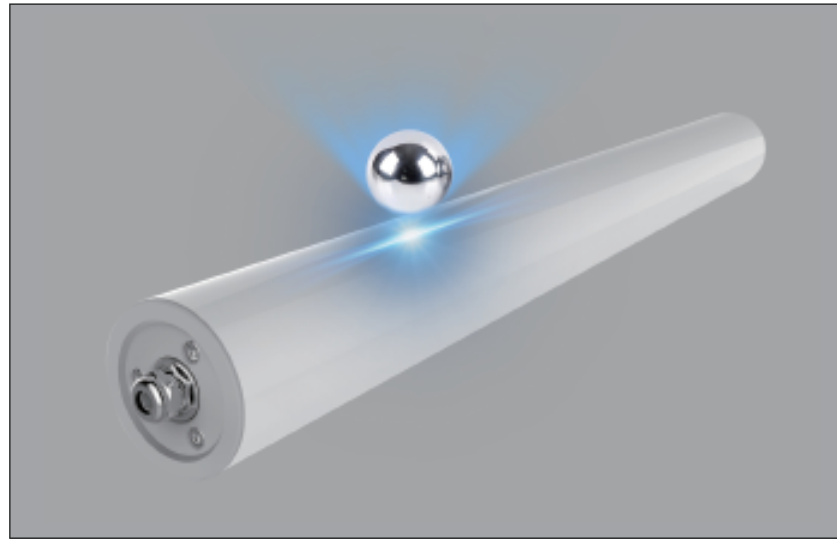
Instruction map

What is LED Tri-proof Light?

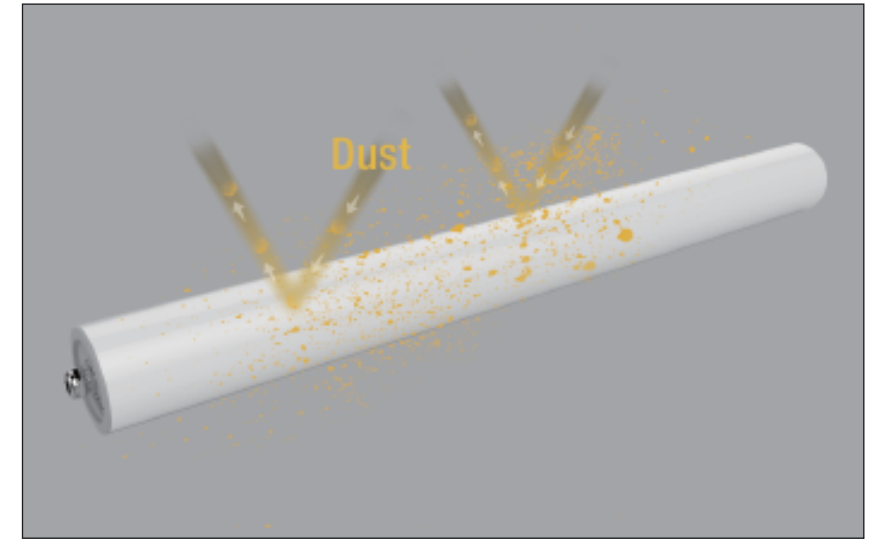
A. Water-proof IP67



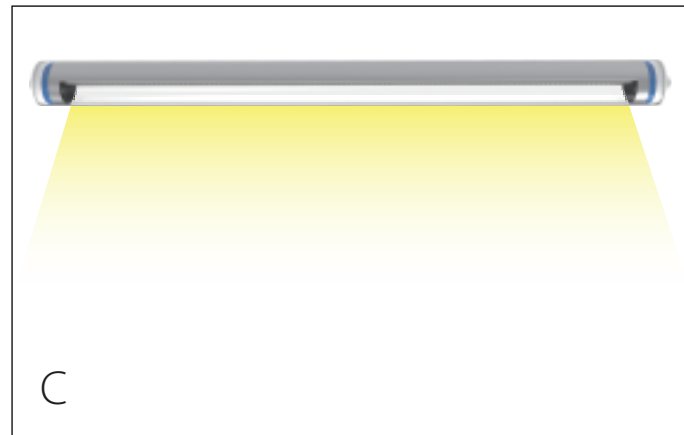
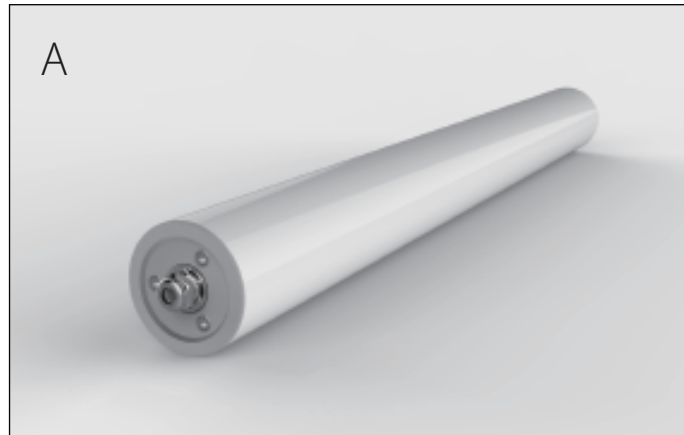
B. Pressure-proof IK08



C. Corrosion and Dust-proof



Parameter



A. Round & Smooth PC Design for Easy Clean.

B. IP67 Water-proof

C. Ultra Brightness 160Lm/W

D. Uniform Optical Design with 180° (look-like)

Solution

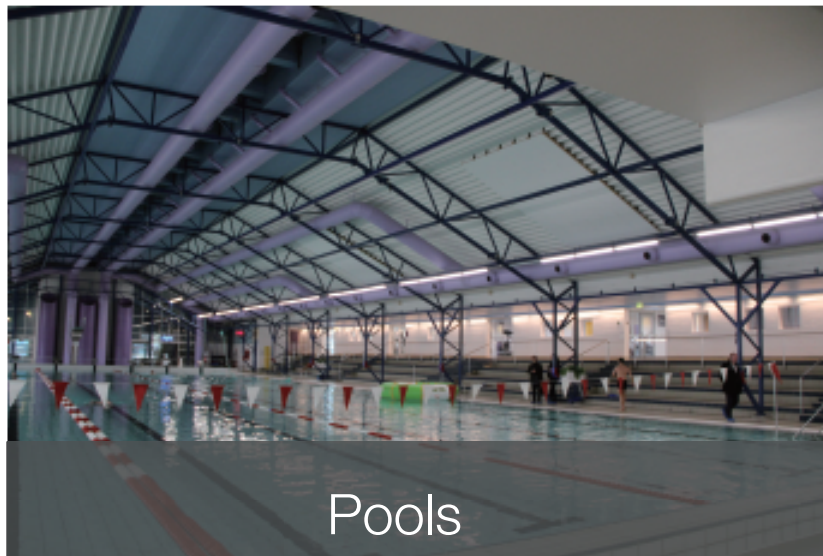
RP (Round Plastic)



Refrigeration rooms



Food industry

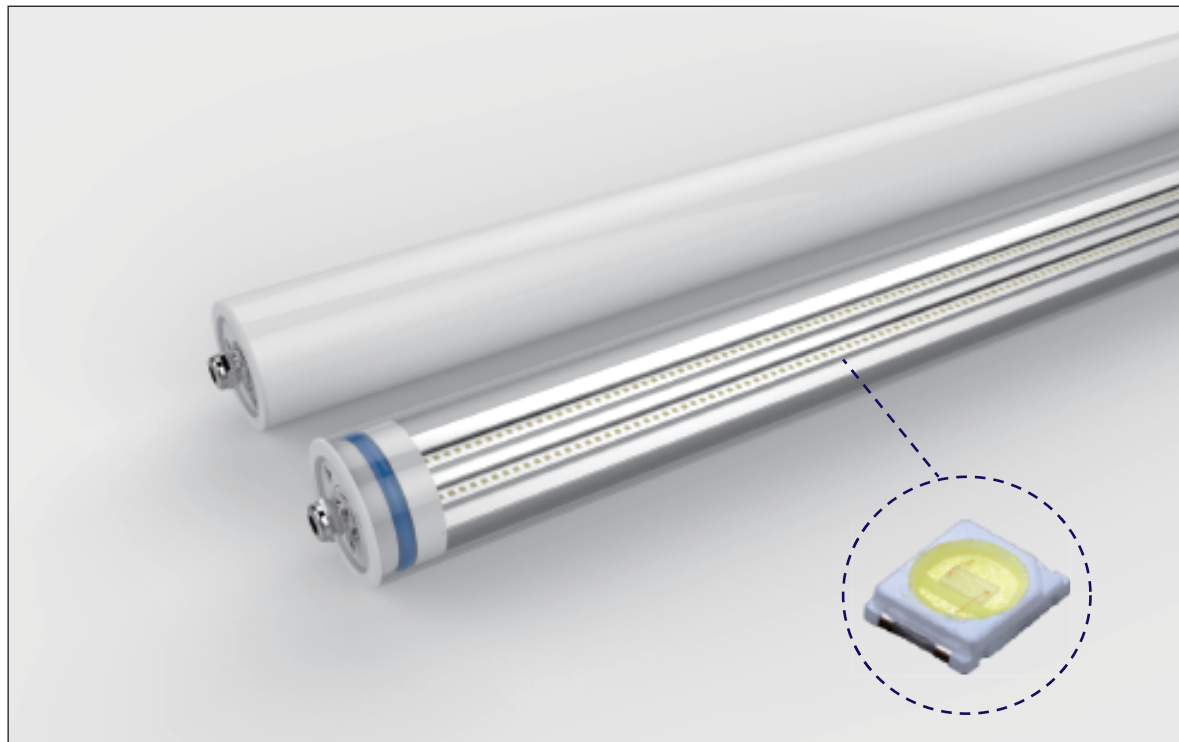


Pools



Farm

Optical Map



High lumens $48W \times 160\text{Lm/W} = 7680\text{Lm}$.
match the standard traditional lamps.

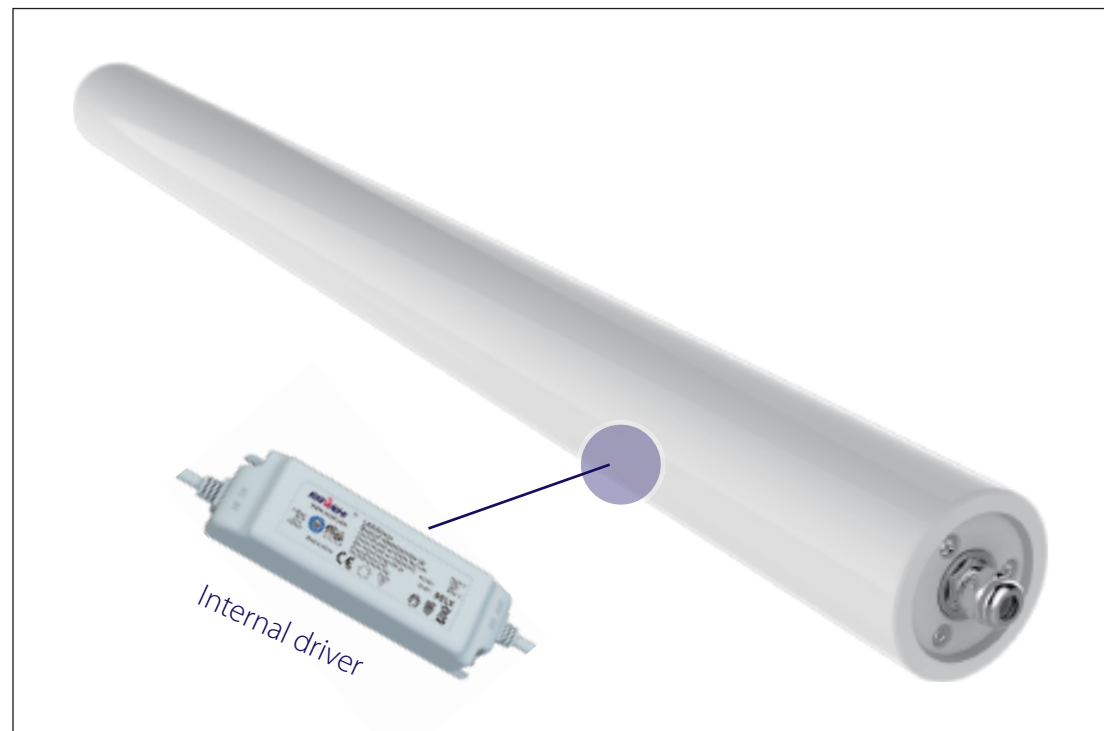
A: LED Tri-proof Light

- a. Max lumens: 7680lm.
- b. Luminous Efficiency can reach 160Lm/w

B.LED package

- a. SMD2835 LED package
- b. High efficiency 160lm/w
- c. Certification: LM-80(LM-90 being updated)

Electronic Map



LED Driver

A. Universal Input AC100-277V

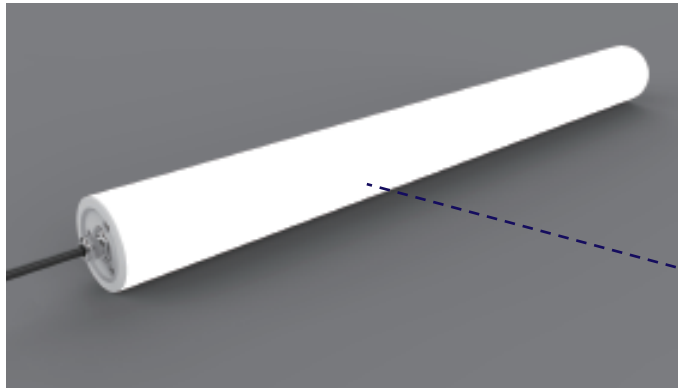
B. THD:<15% PF:>0.95

C. 92% high efficiency

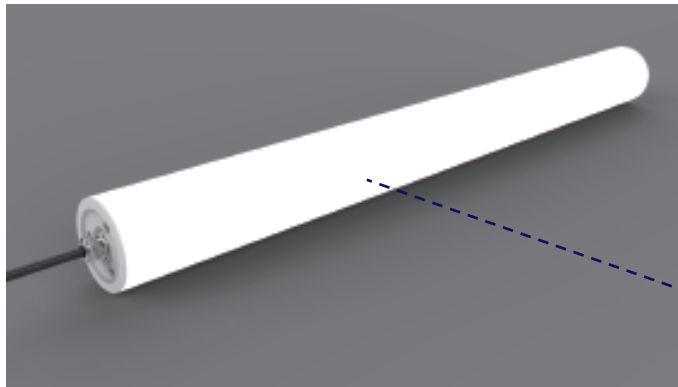
Certification



Advantages



A. Flicker free



B. Flicker

Function: Sometime,if customer need full function for one project, then we can provide



1-10V Dimmable / DALI Dimmable



Emergency



Motion Sensor

Installation

Suspending



Ceiling Mounted



Application

Industrial

Warehouses
Production halls
Food industry
Parking areas
Farms
Refrigeration rooms

Education

Classrooms
Cafetarias
Auditorium
Sports halls
Chemical Lab
Pools

Semi-outdoor

Car parks
Pools
Airports
Train stations
Gas stations
Bus stations
Park
Toll stations

Shop & Retail

Shopping mall
Supermarkets
Retail stores
Food

Architectural

Exhibition center
Library
Art Museum
Concert hall
Museum

Please note :

This specification is for reference only, Ervan reserves the right to change without notice.
This document is of commercial confidential. Please keep it safe.